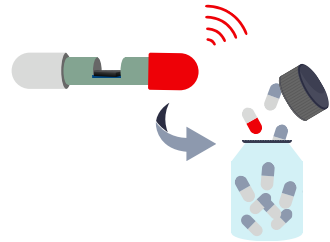


Advanced Medication Monitoring: The passive T/RH Sensor Probe Solution

1 RFID beyond labelling: Lab-in-package

The Passive Sensor Probe aims to transform traditional medicine packaging into Lab-in-package items through:

- The real-time sensing of temperature and relative humidity directly within the microenvironment of medications maintaining packaging integrity.
- The ability to take measurements without having to open the medication container.
- The elimination of the reliance on wired/bulky sensors.



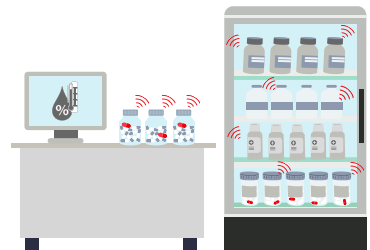
2 Multi-package Monitoring

- Device eligible for diverse medications and types of packages with unaltered performance.
- Suitable for monitoring hundreds of pharmaceutical containers simultaneously.
- Generating unprecedented amounts of data at package-level.
- The flexibility of the testing setup makes the system easily integrated within laboratory workstations.



3 Empowering Pharma Labs and Stability Tests

- The solution is tailored for pharmaceutical companies engaged in late-stage drug development and laboratories conducting stability studies.
- The generated data at package-level, securely streamlined to the enterprise IoT platform, significantly enhances the precision of stability studies for shelf-life predictions and expedites the development of new medicines.



BENEFITS

- ✓ Precision in Storage Conditions
- ✓ Detection of Environmental Changes
- ✓ Unlimited Operational Life
- ✓ Real-time and continuous monitoring
- ✓ Cost Minimization



**Humidity
Detection**



**Temperature
Detection**



Battery-less



Wireless

Potential and future capabilities

- The reader system offers flexible placement in stability chambers or on lab bench shelves.
- Future generations of the device envisage chemical sensing capabilities of pharmaceutically relevant substances .